

Prevectron 3® S60T & S60TC

REMOTE-TESTING

EARLY STEAMER EMISSION AIR TERMINAL (ESE)

| Reference | | P1543T (Without counter) | P1543TC (including counter) |
|--|------------|---|--------------------------------|
| Prevectron 3® Early Streamer Emission Technical Specifications | | | |
| Efficiency | ΔT | 60 μs | |
| Standard deviation ESE / Single Rod | σ | $\sigma_{PDA} < 0.44 \sigma_{PTS}$ | |
| Lightning current withstanding test (10/350 μs) | I_{imp} | 100kA (normative test) | |
| Max. current withstanding test | I_{max} | 230 kA (Unicamp) | |
| Detection of download leader | | Continuous measuring of electric field gradient ($\Delta E/\Delta t$) | |
| Upward streamer development conditions | | Patented OPTIMAX® technology optimizing the streamer development conditions | |
| Upward streamer emission | | Sparking by High Voltage Impulses | |
| Internal circuits | | 6 independent and synchronised modules | |
| Central rod | | Full electrical continuity 200mm ² section – Nickel plated Copper | |
| Detection of download leader | | Stainless Steel 316, Electromagnetic shielding | |
| Maintenance | | Replaceable modules (factory) | |

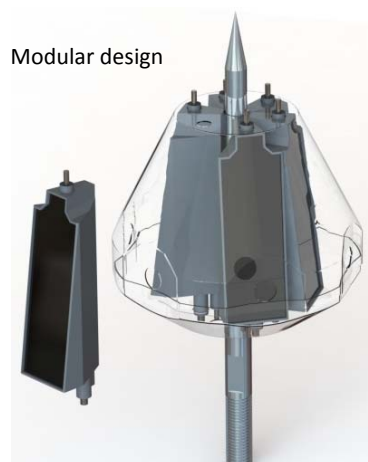
| | | | |
|--|--|--|--|
| Prevectron 3® Remote Testing Module Technical Specifications | | | |
| On-site working conditions testing | Remote testing Module réf.P1591 (not included) : -ESE Lightning conductor condition -Solar Remote Testing Unit battery level | | |
| Remote Testing Module / ESE Lightning Conductor Communication Protocol | Radio-frequency communication HF 2.4GHz Range = 100m/330 ft | | |
| Power Supply | High Performance Li-Fe-Po4 Battery 3 200mA.h - 3,2V | | |
| Battery Charge | Monocrystalline Glass-coated Solar panel | | |
| Counter (option - ref P1543TC) | Integrated Lightning Flash Counter Patented contactless counting technology | | |
| Remote Testing Module central rod | Full electrical continuity 315 mm ² section – Nickel plated Copper | | |
| Remote Testing Module / Precvectron connection | Fast Connect Technology Plug-in system | | |
| Maintenance | Battery Replacement Kit ref. P1599 | | |

PREVECTRON 3® S60



REMOTE TESTING
MODULE
PREVECTRON 3®

Modular design



Accessory (not included)
Testing Remote Control P3 T réf P1591

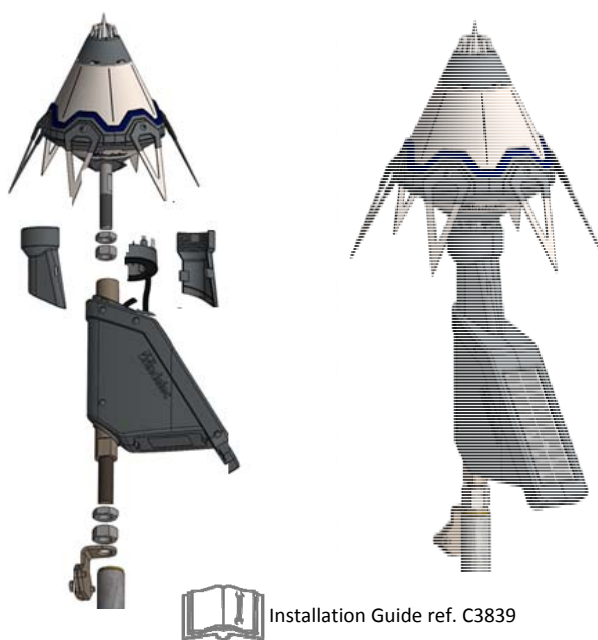
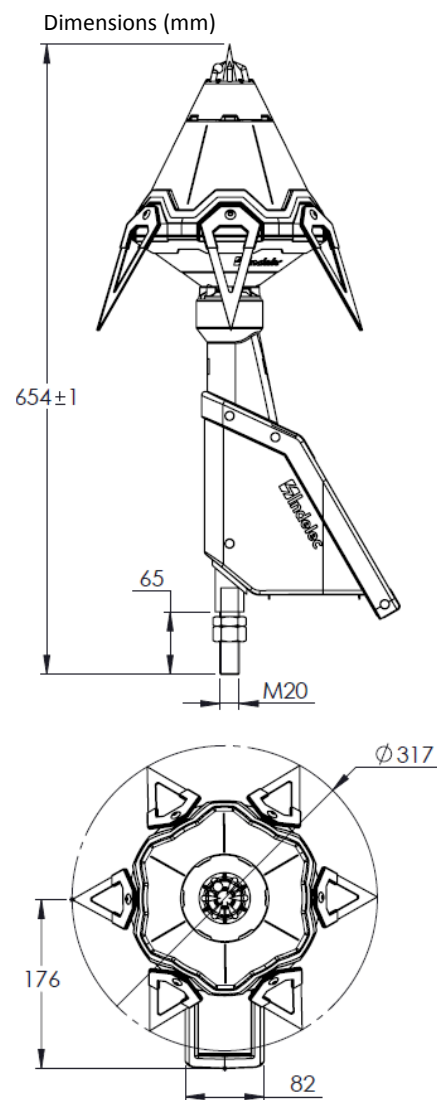


Prevectron 3® S60T & S60TC

REMOTE-TESTING

EARLY STEAMER EMISSION AIR TERMINAL (ESE)

| Reference | P1543T (Without counter) | P1543TC (including counter) |
|--|---|--------------------------------|
| Fixing on pole | M20 Thread | |
| Down-conductor clamp | Proprietary clamp included | |
| Packing | | |
| Dimensions | 485 x 262 x 435 mm | |
| Gross Weight | 8.550 kg | 8.650 kg |
| Warranty | | |
| Warranty (excluding Remote testing module battery) | 5 years | |
| Certificates - Standards | | |
| NF C 17 102:2011, Annex C | Bureau Veritas certificate N°6275241/2/1/1 | |
| Qualifoudre | Ineris certificate N° N°051166662001 | |
| CE Marking | Declaration of Conformity N°IND-CE-21092015-A (Prevectron®3 Lightning conductor) | |
| Underwriter Laboratories (UL) | UL Certified E478687 (Prevectron®3 Lightning conductor) | |
| Lightning Flash Counter (option - ref P1543TC) | EN 62 561-6 Standards | |
| Eco Label | AFAQ N°1335.2 11/2014 Certificate | |
| ISO 9001 : 2015 (Quality System) | Bureau Veritas certificate | |



Installation Guide ref. C3839



Accessory (not included)
Testing Remote Control réf P1591



DOC270a.VEN-Rev0



©INDELEC SA – 61 Chemin des postes F59500 DOUAI - Tel +33 327 944 944
www.indelec.com



Non contractual document - INDELEC reserves the right to modify its product design, dimensions, weight as well as the illustrations without prior notice.